

# ROCKLAND COUNTY SHERIFF'S OFFICE

## POLICE DIVISION



## 2016 ANNUAL REPORT



**July 11, 1960 – September 12, 2016**

***Dedicated to the memory of Captain Matthew McCune***



**Accredited since 2008**

# **ROCKLAND COUNTY SHERIFF'S POLICE DIVISION**

*Accredited since 2008*

## **MISSION STATEMENT**

*The Rockland County Sheriff's Police Division is dedicated to the protection of life and property, reduction of crime through patrol and enforcement, and the provision of a safer environment in which our citizens can live, work, and pursue a better quality of life.*

## **CODE OF ETHICS**

*As a member of the Rockland County Sheriff's Police Division, my fundamental duty is to serve humankind; to safeguard lives and property; to protect the innocent against deception, the weak against oppression or intimidation, and the peaceful against violence or disorder; and to respect the constitutional rights of all people to liberty, equality and justice.*

*I will keep my private life unsullied as an example to all; maintain courageous calm in the face of danger, scorn, or ridicule; develop self-restraint; and be constantly mindful of the welfare of others. Honest in thought and deed in both my personal and official life. I will be exemplary in obeying the laws of the land and the regulations of my department. Whatever I see or hear of a confidential nature or that is confided to me in my official capacity will be kept ever secret unless revelation is necessary in the performance of my duty.*

*I will never act officiously or permit personal feelings, prejudices, animosities, or friendships to influence my decisions. With no compromise for crime and with relentless prosecution of criminals, I will enforce the law courteously and appropriately without fear or favor, malice or ill will, never employing unnecessary force or violence and never accepting gratuities.*

*I recognize the badge of my office as a symbol of public faith, and I accept it as a public trust to be held so long as I am true to the ethics of the police service. I will constantly strive to achieve these objectives and ideals, dedicating myself before God to my chosen profession...LAW ENFORCEMENT.*

## *CORE VALUES*



**Accountability:** the fact or condition of being accountable; responsibility

**Commitment:** the state or quality of being dedicated to a cause, activity, etc.

**Teamwork:** the combined action of a group of people, especially when effective and efficient.

## *CHIEF'S MESSAGE*



I have been with the Sheriff's Office for over 33 years and have been the Chief of the Police Division since 2012. It is a privilege to lead the men and women of the Rockland County Sheriff's Office who have dedicated themselves to public safety in our county.

The mission of the Sheriff's Office Police Division is to deliver public safety services to our community with the utmost professionalism and integrity. Our vision is to work alongside other police agencies in the community by providing exceptional policing services that embody the spirit of community partnerships by being responsive, efficient and transparent in resolving community concerns about public safety.

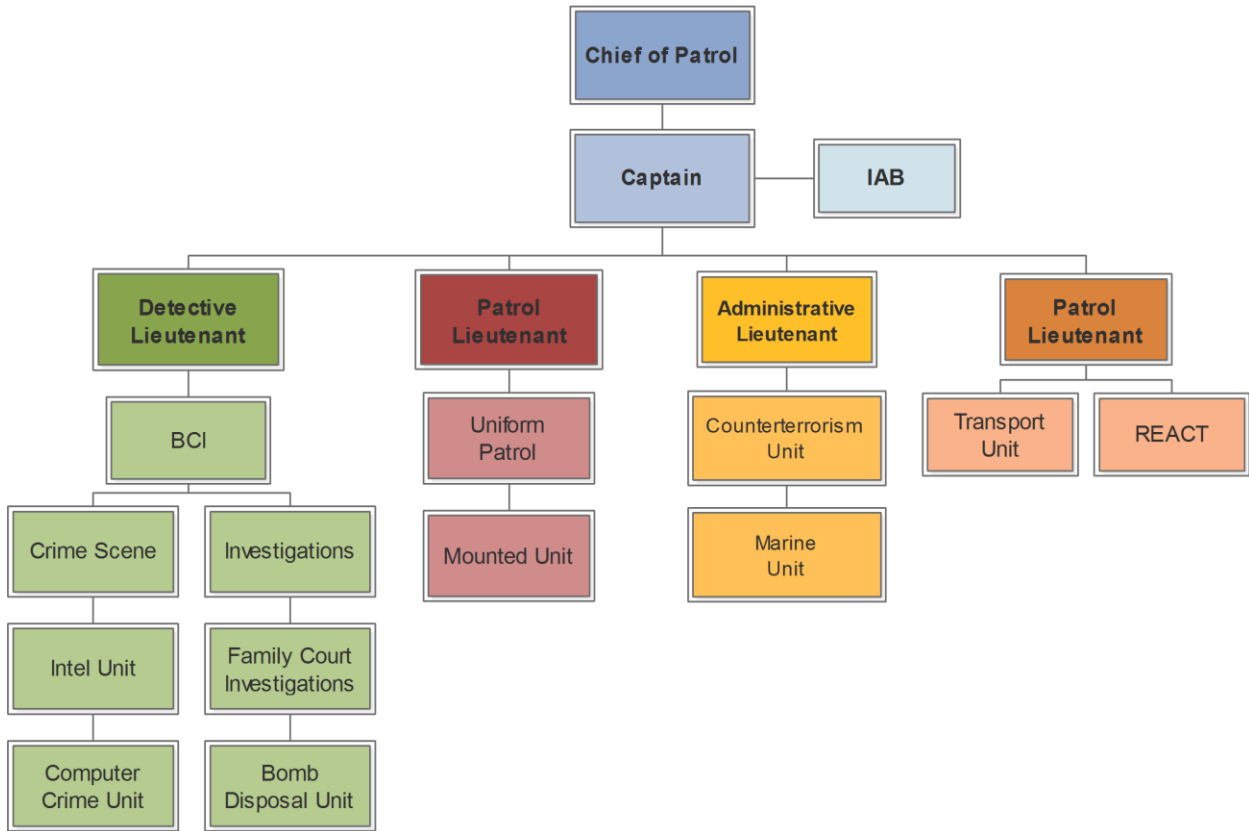
The protection of county properties and road ways are some of our prime functions. We provide specialized services to each and every law enforcement agency within the county. Our centralized services offer county-wide coverage such as the Crime Scene Unit, Bomb Squad, Marine Unit just to name a few.

Our strategic goal is providing "Public Safety." This goal can only be accomplished through community/law enforcement partnerships that will prevent and reduce crime. I am pleased to present the 2016 Annual Report. It provides organizational information, county data, statistics, services and resources. Our Department is staffed by dedicated men and women who adhere to our values of integrity, accountability, community participation, and quality service. We strive to provide the best in community safety for all those who live, work and visit the County of Rockland.

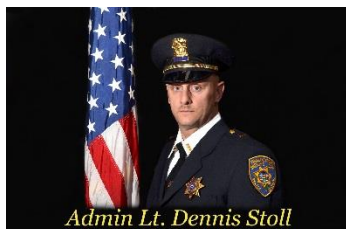
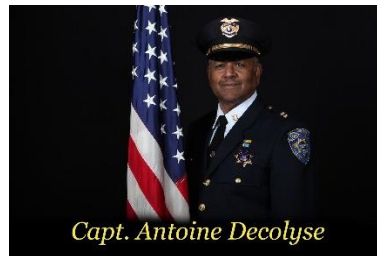
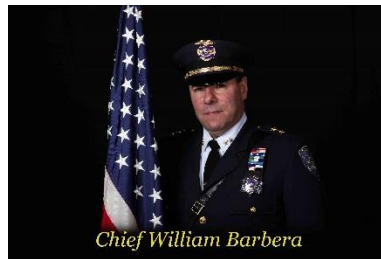
# ROCKLAND COUNTY SHERIFF'S OFFICE

## POLICE DIVISION

### ORGANIZATION CHART



# COMMAND STAFF



*Lt. Benison    Lt. Cuffari*

# ***2016 DIVISION PERSONNEL***

1. Chief William Barbera
2. Capt. Antoine DeColyse
3. Admin. Lt. Dennis Stoll
4. Det. Lt. Theodore Brovarski
5. Lt. James Benison
6. Lt. John Cuffari
7. Det. Sgt. Kenneth Johnston
8. Sgt. Michael Hynes
9. Sgt. Michael Mondelli
10. Sgt. Joseph Guidice
11. Sgt. Albert Brunner
12. Sgt. John Murphy
13. Sgt. Joseph Sapienza
14. Sgt. Christopher Ford
15. Sgt. Omar Munoz
16. Sgt. Todd Farmer
17. P.O. Walter Famular
18. P.O. Gerald Verdicchio
19. P.O. John Foody
20. P.O. John King
21. P.O. Seth Shubert
22. P. O. Robert Hayward
23. P.O. Robert Vlastelica
24. P.O Joseph Reicher
25. P.O. Richard Martucci
26. P.O. John Scanlon
27. P.O. William Hickey
28. P.O. Christopher Corbett
29. P.O. Erica Defilippo
30. P.O. Robert Moger
31. P.O. Paul Garrison
32. P.O. Yvonne Raggo
33. P.O. Charles Lowther
34. P.O Jose Nunez
35. P.O. James Russell
36. P.O. Christopher Finch
37. P.O. Thomas Hendrickson
38. P.O. Simon Perrone
39. P.O. Matthew Myers
40. P.O Kevin Golden
41. P.O. Angelo Bragaglia
42. P.O Matthew Leach
43. P.O. Sergei Tchertkoff
44. Det. Henry Bender
45. Det. Brian Sherry
46. Det. John Read
47. Det. Aloysius McMahon
48. Det. Matthew Winters
49. Det. Steve Pelzar
50. Det. Pierce Redmond
51. Det. Douglas Lerner
52. Det. Milson Jenkins
53. Det. Mark Swammy
54. Det. James Tafuri
55. Det. Daniel Lungen
56. Det. Michael Bauer
57. Det. Melissa Johnston
58. Det. Keith Latarski
59. Det. Richard Madden
60. Det. James Davis
61. Det. Dwayne Defino
62. Det. Brian Welikson
63. Det. Kerri Kralik
64. Det. John Squillini
65. Det. Patrick Bauer

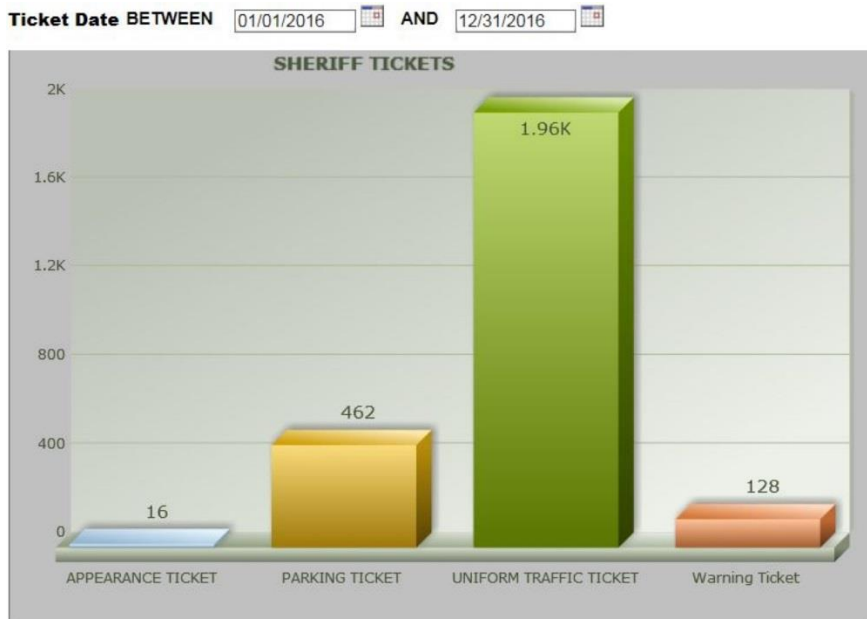
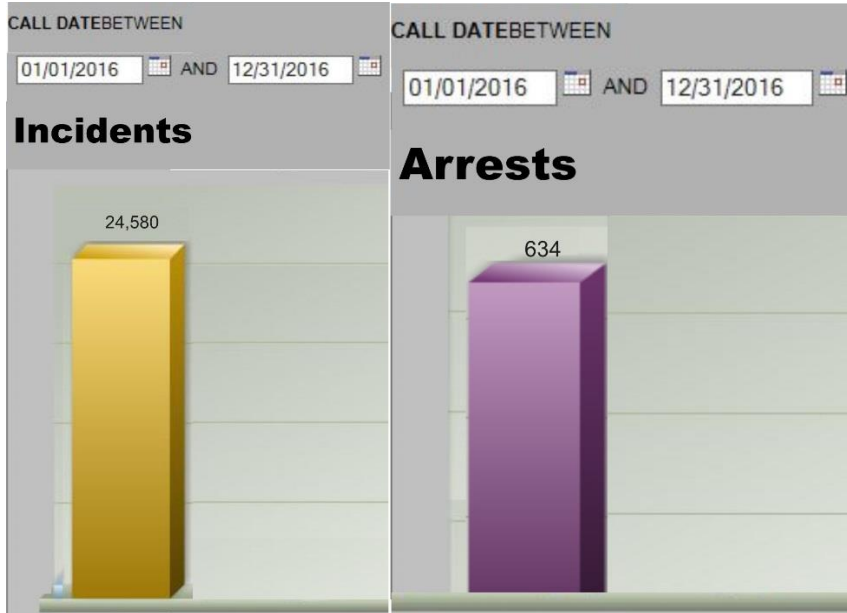
## **Administrative Staff**

66. Janice Pritchard-Krol
67. Arlene Rooney
68. Camille Muscatella
69. Kathleen Hurley
70. Dolores Contessa
71. Aileen Wynne

1. P.O. (Rlf) Steve Levy
2. P.O. (Rlf) Sean Russo
3. P.O. (Rlf) Francis Armstrong
4. P.O. (Rlf) Joseph Bonardi
5. P.O. (Rlf) Peter Claussen
6. P.O. (Rlf) Joseph Grunski
6. P.O. (Rlf) Charles Hatala
7. P.O. (Rlf) Seamus Lyons
9. P.O. (Rlf) Gregg Soriano
10. P.O. (Rlf) George Zayas
11. P.O. (Rlf) Ronald Serano
12. P.O. (Rlf) Howard Tabankin
13. P.O. (Rlf) Scott Tabankin
14. T/O (Rlf) Mark Acker
15. T/O (Rlf) Pio Annunziata
16. T/O (Rlf) Maria Barberis
17. T/O (Rlf) Robert Bardio
18. T/O (Rlf) Frank Buonaiuto
19. T/O (Rlf) Tara Cable
20. T/O (Rlf) John Carty
21. T/O (Rlf) Kenneth Clark
22. T/O (Rlf) Ronald Click
23. T/O (Rlf) Paul Crowley
24. T/O (Rlf) Yolanda Cruz
25. T/O (Rlf) Christopher Eliopoulos
26. T/O (Rlf) Richard Emhardt
27. T/O (Rlf) Kieran Farrell
28. T/O (Rlf) George Galione
29. T/O. (Rlf) Denise Garcia
30. T/O (Rlf) Thomas Giannattasio
31. T/O (Rlf) David Grossbard
32. T/O (Rlf) Charles Harnan
33. T/O (Rlf) Frank Ippolito
34. T/O (Rlf) Nomathade Jenkins
35. T/O (Rlf) Michael Klein
36. T/O (Rlf) William Koutsoupis
37. T/O (Rlf) Jennifer Lambausta
38. T/O (Rlf) Timothy Lang
39. T/O (Rlf) Brett Levine
40. T/O (Rlf) Brandon Levy
41. T/O (Rlf) Steve Malloy
42. T/O (Rlf) Christine Marino
43. T/O (Rlf) Patrick McCormick
44. T/O (Rlf) Franics McCoy
45. T/O (Rlf) Jean Mondestin
46. T/O (Rlf) Peter Monroe
47. T/O (Rlf) Dennis Murphy
48. T/O (Rlf) Derek Neretich
49. T/O (Rlf) Lawrence Praino
50. T/O (Rlf) Joseph Reardon
51. T/O (Rlf) Patrick Reilly
52. T/O (Rlf) Thomas Rizzo
53. T/O (Rlf) Carmine Romeo
54. T/O (Rlf) Steven Ruffino
55. T/O (Rlf) Edward Sheehan
56. T/O (Rlf) Jean Simpson
57. T/O (Rlf) Robert Sormani
58. T/O (Rlf) Martin Steinberg
59. T/O (Rlf) Ronald Taggart
60. T/O (Rlf) Brett Thiesing
61. T/O (Rlf) Pasquale Valentino
62. T/O (Rlf) Eric Vazquez
63. T/O (Rlf) Christopher Watson
64. T/O (Rlf) Edward Weireter
65. T/O (Rlf) Mark Yellen

# UNIFORM PATROL SERVICES

The Rockland County Sheriff's Patrol is responsible for the protection of county properties, roads, thoroughfares, holdings and interests. The Uniform Patrol will answer calls for service and handle any and all complaints occurring in or on Rockland county properties. The Uniform Patrol comprises of 3 patrol squads covering the day and evening shifts. Each squad is headed by a sergeant. The midnight shift comprises of three teams headed by two sergeants. The patrol squads supervised by two patrol lieutenants, who also supervise specialized uniform services, like the Marine and Mounted units. In 2016 the calls for service totaled 24,580, an increase of 22% over 2015.





## Marine Unit

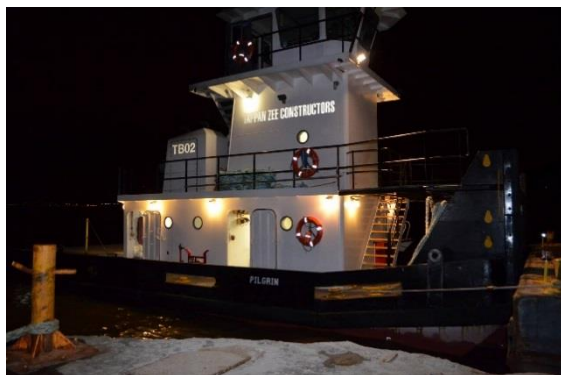


The Marine Unit is a full service navigational safety and enforcement unit. It is 50% funded by The New York State Office of Parks, Recreation and Historic Preservation. The Marine Unit is based out of two locations one on the southern end of the county at the Tappan Zee Bridge and the other at the northern end of the county in Stony Point. It utilizes three vessels to patrol the County's 33 mile water boundary from Bear Mountain South to Palisades, NY.



In 2016 the Marine Unit purchased a new patrol vessel for \$315,500, 75% of which was paid for, by the Coast Guard via a Port Security Grant. The Marine Unit provides enforcement, safety, ecological and rescue services while interacting with all emergency services and environmental agencies. The Marine Unit is responsible for providing security to key pieces of New York State infrastructure like the Bear Mountain Bridge, the

Indian Point Nuclear Power Plant (in conjunction with the US Coast Guard, NY Naval Militia and the Westchester County Police), the Bowline Power Plant, the NY Waterway Ferry and the Tappan Zee Bridge.



In recent years, the Marine Unit has been requested to provide additional security for the Tappan Zee Construction project. The Marine Unit provides a high visibility patrol in the area of the Tappan Zee Bridge while enforcing the security zone set by the US Coast Guard. The Marine Unit focuses on educating boaters while enforcing the rules and regulations of the Hudson River. The Marine Unit can be requested all year round 24 hours a day.



## Mounted Unit

The Mounted Unit was established to provide specialized and general mounted police services to all the people of Rockland County.

The Mounted Unit regularly patrols the County parks and County operating centers. Upon request, mounted patrols are also conducted in public access and parking areas of local malls during times of high traffic. Mounted Units have responded to the scenes of labor disputes and public disorder, to assist with containment and dispersal operations. During the school year the Unit is assigned to Rockland Community College.

In addition the Mounted Unit participates in community policing functions like crowd control, traffic direction and search and rescue. The ability of the horses to negotiate terrain that vehicles cannot access vastly increases the chances of locating a lost or injured person. High visibility mounted patrols function in conjunction with local police jurisdictions to provide coverage in areas that have shown a high incidence of street crime, like drug sales, robberies and assaults. In response to a request from the Chiefs of Police, the unit is currently assigned to the Villages of Nyack, Spring Valley and Haverstraw on the weekends.

Directed Patrols: 103  
Police Department assists: 43  
Public Assists: 35  
Agency Assists: 3  
Training: 90  
Homeland Security Checks: 5  
Other Incidents: 33

Total Incidents: 312

## K-9 Unit

The Patrol K9 team is a full time unit, and in addition is made available on a 24 hour basis for tracking and drug detection.



**K9 “Shadow”, a fully equipped patrol SUV, and all the necessary equipment and training for the unit were all purchased at no cost to the tax payers of Rockland, using asset forfeiture funds.** K9 Shadow is a 8 year old German Shepherd from the Czech Republic and has been partnered with Sgt. Christopher Ford for the past six years. The team graduated from the Orange County Sheriff’s Office K9 Patrol/Narcotics School in 2011.

K9 Shadow is a dual purpose K9 and is certified in tracking, evidence searches, apprehension, handler protection and narcotics detection.

Until the Corrections Division set up their own K9 team Sgt. Ford and Shadow played a vital role in assisting correctional officers in the prevention and detection of narcotic contraband at the Rockland County Jail. The team also conducts checks of visitors’ vehicles entering the RC Jail.

The K9 Team is also deployed to assist the County’s tactical REACT team.

In 2016 K9 Team had over 175 K9 calls for service

In August of 2016, the K9 Team was requested by the NYSP for a K9 narcotic/drug sniff of a SUBJECT of a narcotics investigation. K9 Shadow alerted to a trap inside the vehicle and further investigation revealed over 7.9 ounces of cocaine secreted in floor of vehicle. This K9 deployment played an integral part in a long term narcotics investigation and the department received a portion of the asset forfeiture proceeds.



In October 2016 Sheriff Falco introduced our newest K9, Holder, and his handler PO Matt Myers of the Police Division. K9 Holder is a 3 year old Bloodhound donated through the National Police Bloodhound Association. It is the first Police bloodhound in Rockland County and was partnered with PO Myers since September 2016. The K9 team graduated from the Westchester Police Department and is certified by DCJS to aid in the search of suspects, missing children, Alzheimer’s patients etc.

Demonstrations of K9 Holder’s remarkable abilities were conducted after the initial introduction. The K9 Team has already had over 5 calls for service for robbery/burglary suspects and missing endangered persons.

### Transport Unit



The prisoner transport unit was established in the early 1980s after the New York State Chiefs’ Association filed a lawsuit and forced all Sheriffs throughout the State to take custody of all prisoners upon remand by the Judge to the custody of the Sheriff. The unit is responsible for the handling and movement of all inmates committed to the Rockland County Correctional Facility. It executes all remand orders from local and county courts as well as orders to produce from both these jurisdictions. In addition inmates are transported to and from local clinics and hospitals and other institutions, out of the county, including State and New York City correctional facilities. The unit comprises of recently retired law enforcement professionals. The officers of this unit are responsible for the care, custody and control of several thousand inmates, yearly, while transporting them, outside the Correctional facility.

### 2016 Totals

County Court transports:	1002
Justice Court transports:	817
Medical transports:	343
Remands:	630
Other:	275
<b>Totals</b>	<b>3067</b>



## Transports



## Reserve Force

The Rockland County Sheriff's Reserve Police Force is an all-volunteer force from diverse social, ethnic, religious and occupational backgrounds that is used to augment and supplement full time law enforcement staff. It is dedicated to the protection of life and property and the preservation of a safe environment for the citizens of Rockland County.

The Reserve Force assists the regular staff during times of declared emergencies, disasters, or war. They may assist with traffic and crowd control at parades, sports and special events, residential house checks, crime prevention and traffic safety. They are the eyes and ears of regular police officers and the community.



# Traffic Safety

## DWI Enforcement

### STOP DWI (Special Traffic Options Program for Driving While Intoxicated)



It remains our objective to continue aggressive DWI enforcement throughout Rockland County. With the continued support of the Rockland County STOP DWI and organizations such as MADD we will remain truly dedicated to DWI enforcement and hope to provide a safer environment for our citizens. Through diligent D.W.I. enforcement, and use of the DWI Mobile Field Unit, this agency has sought to increase its DWI arrest activity over the past few years. In 2016 the Division made 32 DWI arrests.

The breakdown is listed below:

1192.1 Impaired by Alcohol	2
1192.3 DWI (M)	19*
1192.3 Felony	1
1192.2aa (Aggravated DWI)	7
1192.2ab (Leandra Law)	2
1192.4 (Drug only)	1**
1192.4a (Drug/Alcohol)	0
1198.7 Interlock Violation (M)	1

\*1 of the 1192.3 arrests was also charged 1198 for failure to use Interlock device in a vehicle.

\*\* 1192.4 charge was also charged with 1192.2aa

### STOP DWI Victim Impact Panel

A panel of victims speaks briefly about the drunk driving crashes in which they were injured or a loved one was killed. Each panelist tells their story and how their lives were affected by the crash or the death of a family member. There is no interaction between the victims and the audience; however, a question and answer period may follow if the victims are willing to participate. The audience members consist of people convicted of alcohol-related offenses and those on probation for Driving While Intoxicated.

Two officers attend each and every victim impact panel meeting. The officers are responsible for monitoring all of the Court Ordered (CO) attendees. The officers conduct Alco-sensor tests on all the CO attendees to insure they are attending in a sober condition, and in addition all CO vehicles are screened when entering the parking lot area. This is to identify anyone operating while his or her driving privileges are either suspended or revoked for DWI.

The panel meets six times each year at the Rockland County Fire Training Center, Fireman's Memorial Drive Pomona, New York. Each year, approximately 1,000 people attend the Rockland County Victim's Impact Panel meetings.

## **DCAT (Drug Court Random Alcohol Testing Program)**

Drug Court is a specially designated Court wherein a range of services and sanctions are utilized to reduce drug abuse and recidivism among non-violent, drug-addicted offenders. Drug Court programs bring the full weight of interveners (the judge, probation officers, correctional and law enforcement personnel, prosecutors, defense counsel, drug-testing personnel, rehabilitation and treatment specialists, educators, etc.) to bear, forcing the offender to deal with his or her drug abuse problem or suffer the consequences.

Officers of the Sheriff's Uniform patrol are requested by Drug Court to conduct random Alco-sensor testing on Drug Court participants in order to monitor their alcohol intake on a 24-7 basis. These tests were conducted utilizing two separate methods. First method consisted of Random Home Visitations that were conducted primarily in the late evening hours by two officers. The second method is the Fuchsia testing, in which subjects were ordered to respond to our station during the early morning hours, for alcohol testing, before going to work. All tests are random and unannounced. The subjects are only given 30-minute prior notice before having to submit to an Alco-sensor test. Since the program's inception date of August 1, 2008 members of the Uniform Patrol conduct on the average 200-300 tests per year.

In 2016 a total of 87 tests were conducted, 65 of which were conducted at the station.

## **FCAT (Family Court Random Alcohol Testing Program)**

This Treatment Court is designed to oversee and monitor the defendants who have been ordered into treatment after being in the position of losing their children because of substance abuse and other issues. The program demands that parents enter drug rehabilitation, get tested regularly, take parenting classes and receive counseling for their addiction. If they complete the three-phase program, which can last up to 18 months, their children are allowed to live with them.

Officers of the Sheriff's Uniform patrol are requested by the Treatment Court Coordinator to conduct random alcohol testing on those subjects believed to be in violation of the Treatment Court orders. Unlike Drug Court, the officers visit only the home, and do not contact the subject prior to their arrival. The purpose of this spot-check is not only to determine if the subject is under the influence of alcohol or drugs, but is also an avenue to observe the home environment and to check on the welfare of children who may still reside within the household or who have been returned to the household. If anything is discovered either criminal or negligent in nature, the officers immediately contact representatives from Child Protective Services and an investigation ensues.

## **CVE (Commercial Vehicle Enforcement)**

CVE Details are carried out in conjunction with the NY State Police, NYS Department of Transportation and local police departments. In 2016 one CVE detail was conducted in conjunction with Piermont PD in their jurisdiction. Eleven (11 UTTS were issued).

## **PTS (Police Traffic Services)**

The Sheriff's Police Division conducts targeted vehicle and traffic enforcement like red light, seat belt and distracted driving (texting and cell phone) violations. The funding for these programs is received through grants from the Governor's Traffic Safety Committee. In 2016 a total of 220 tickets were issued for the Buckle Up, Safe Stop and Distracted Driving programs.

## Child Passenger Safety Program

The Rockland County Sheriff's Office Child Passenger Safety (CPS) Program continues to educate parents and caregivers about the proper ways to transport children safely using child safety seats and seat belts. The purpose of a child safety seat check is to focus on the appropriate child restraint selection and proper installation. As a test to insure the knowledge and capabilities of a parent/caregiver, they are requested to perform the final installation of the child safety seat in the vehicle before leaving the event hosted.

In 2016 the program conducted nine (9) Monthly Fitting Station Seat Checks at Sheriff HQ and hosted or assisted at 5 Child Seat Check Events. A total of 173 vehicles responded to these events for seat checks, 201 seats were installed or checked and 18 seats were given away. Funding for the car seats comes from a grant allocation by the NY State Governor's Traffic Safety Committee.

In 2016 four (4) new officers were certified as CPS technicians raising the total number of certified technicians to 7.



## LPR (License Plate Reader)

In 2005-2006 the Rockland County Sheriff's Office was awarded a grant from NYS DCJS for a Mobile License Plate Reader (LPR) to be installed in one (1) patrol vehicle. Subsequently as part of the Secure the Cities (STC) initiative, an additional LPRs were added to the RCSO patrol fleet, bringing the RCSO total to six (6) mobile plate readers for patrol fleet operations

In 2016 the Sheriff's Office added a fixed position LPR to monitor traffic in and out of the Sheriff's Office/Jail complex. All collected data is uploaded to the info-sharing database.

The use of the LPR has resulted in several significant arrests such as stolen vehicles and a vehicle known to contain handguns.



## *Community Relations*

### **Operation Medicine Cabinet (Prescription Drug Disposal Program)**

As part of a statewide prescription drug disposal program, the Rockland County Sheriff's Police Division has been approved as a 24/7 drop-off location (as of 2012) for disposal of expired or unwanted prescription drugs. Members of the public can simply come to our front desk and discard their unwanted or expired medication into a pre-marked container located within the lobby area of the Sheriff's HQ. (With no questions asked). Officers do not request ID from subjects, nor do they ask any questions pertaining to description or ownership of the medications being discarded.

The purpose of this program is to remove unwanted drugs from the household, where they can be easily accessed and taken for the purpose of illegal sales and consumption. Since the program's inception, thousands of pounds of unwanted prescriptions have been collected and destroyed via the Sheriff's Police Division.

In 2016 alone 2,830 pounds of unwanted prescription medication was destroyed.

### **CARE (Computer Aided Rescue Effort)**



The Rockland County Child C.A.R.E. Program is a pro-active program designed to protect and educate the children of Rockland County on the issues of child abuse and abduction. This is a program initiated by the Sheriff and the local Chiefs of Police. A trained officer visits over 80 individual schools and the children in grades K-8, are digitally imaged and identified by name, age and school. The data is stored electronically for immediate retrieval in the event of abduction or a missing child report within minutes of the report of the missing child. This information is used for local alerts as well as Amber Alert activations and sent to the National Center for Missing and Exploited Children (NCMEC). The division has the capability to transmit photographs and descriptors to law enforcement agencies in the region as well as a myriad of other public locations.

In 2016 approximately 476 images were obtained and uploaded into the data base from two schools.

### **Silver Alert Program**

To help protect an increasing number of citizens with cognitive impairments who wander and become missing, the County Legislature in conjunction with the Sheriff's Office and various town and village police departments initiated the "Silver Alert" program. The Silver Alert program is modeled after the Amber Alert program for missing children now in effect in all 50 states. The alert programs can quickly distribute information about missing persons to law enforcement, radio, and television stations. The alerts are designed to advise the public of a missing adult, by utilizing all forms of media, as well as using other messaging alternatives such as traffic signs. While the Amber Alert programs quickly disseminates information about missing children, Silver Alert programs are designed particularly to protect individuals over 18 years of age suffering from Alzheimer's disease, dementia or other cognitive or intellectual impairment.

The Silver Alert program is a county-wide law enforcement initiative; it allows local law enforcement to disseminate to media outlets, vital information about these vulnerable individuals who have wandered from their caretakers and to aid in the search and safe return of these individuals to those responsible for them.

In 2016 a total of nine subjects were registered in the program.



## Project Lifesaver

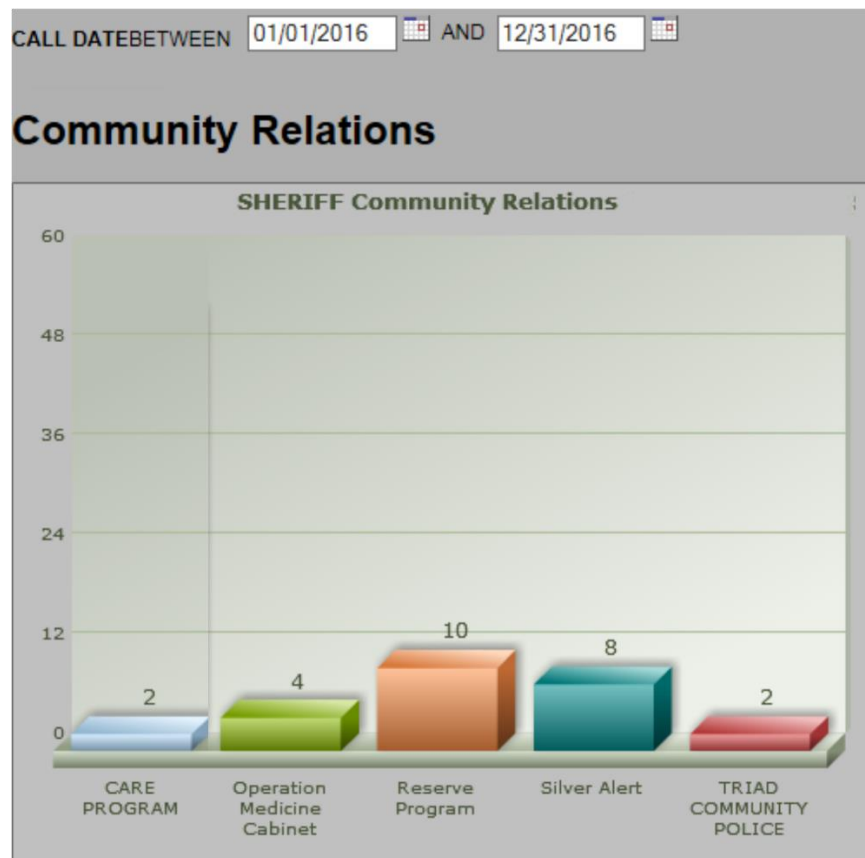


Project Lifesaver is a program to electronically locate those who wander. It provides a timely response to save lives and reduce potential injury for adults and children suffering from Alzheimer's disease, dementia or other cognitive or intellectual impairments which place them at risk. The program places personalized radio transmitters on identified persons. These transmitters assist in locating those who wander resulting in an average rescue time of less than 30 minutes. In 2016 a total of two subjects were enrolled in the program.

## TRIAD



This is a program that focuses on reducing the criminal victimization of older Americans, and the enhancement of the delivery of law enforcement services to these individuals. It is a symbol of unity between the Sheriff, local police, and the American Association of Retired Persons (A.A.R.P.) The main purpose is to reduce senior victimization, enhance a sense of security among seniors through education, training and involvement. It is designed to improve the overall quality of life for seniors. The Rockland County TRIAD and all police agencies in Rockland County recognize that the safety concerns of our senior citizens are a priority consideration. They are most vulnerable to the criminal element and require a special efforts and plans for their protection. In 2016 a total of 16 senior meetings were attended.



## **Internship Program**

Officers from this agency administer the Internship Program for areas high schools and colleges. Students are afforded to the opportunity to interact and observe members of this agency in every aspect such as Corrections, Civil, Patrol and Communications. Interns receive a tour of the County Judicial system and observe criminal court proceedings. They visit the county jail and the police academy and generally learn about law enforcement as a profession. The student is then required to write a reaction paper to convey their experiences and fundamentals derived from the entire process. Recently a joint internship program with Clarkstown PD was initiated.

In 2016 a total of 10 students were enrolled in the internship program.

## **Animal Abuse Registry**

Animal cruelty being a serious problem, The Rockland County Legislature established Local Law # 2 of 2011 known as “the Animal Abuser Registry Law” to establish an online animal abuser registry. This registry is for individuals residing in Rockland County, who are convicted of animal abuse crimes. The Rockland County Sheriff was directed to maintain this registry. Currently there are 2 offenders on this registry.

## **Safe Haven**

The Rockland County Sheriff’s Police Division is also designated as a safe haven drop off location. A distressed parent who is unable or unwilling to care for their infant can give up custody of their baby, no questions asked. As long as the child shows no signs of intentional abuse, no name or other information is required. It's safe as long as they locate a person at the safe haven drop off location to turn over the child.

## **Social Media**

The Sheriff’s Police Division maintains a website, a Facebook page and a twitter account for the speedy dissemination of information via social media. It also uses the Mobile Patrol App which can be downloaded on any smartphone.

## **Flow Control**

This program is conducted in conjunction with the Rockland County Solid Waste Facility and Rockland County Health Department to monitor the flow control in the county and determine if all waste generated in the county is brought to the Rockland County Solid Waste Facility for disposal.

# *Bureau of Criminal Investigations*

## **Statewide Automated Biometric Identification System (SABIS)**

The crime scene units also houses and maintains the Hudson River West Region Site of the New York SABIS. This site has been in operation since the system's inception in 1989. SABIS sites were initiated by the New York State Division of Criminal Justice (DCJS) as latent fingerprint databases and contain over 8 million criminal and civil fingerprints. Latent searches may now be performed for both fingerprints and palm prints. Search results are usually available for review by examiners within minutes. These prints are constantly being updated in the database. SABIS is a multi-modal biometric system. It has the capability to augment identification processing with facial recognition and iris scan technology.

As an operational SABIS site, cases are accepted from any Law Enforcement Agency that makes a request. In addition to serving Rockland County agencies, cases have been received from New York and New Jersey State Police, the local field offices of the F.B.I., and local Police Departments in New Jersey.

As an enhancement to the site the Authenticated Digital Asset Management System (ADAMS) has been added to increase the unit's quality and productivity. This system allows complete digital management and enhances latent prints while searching the NYS database and the federal (FBI) database thereby increasing the number of total identifications. SABIS can also perform remote searches of the FBI's Integrated Automated Fingerprint Identification System (IAFIS) which has a nationwide file of over 800 million images.

### **2016 Totals**

New Case Latent Comparison: 7625

Total Cases Entered: 112

New Latents Searched: 305

Total Identifications: 87

### **Crime Scene Unit**

The Rockland County Sheriff's Office Crime Scene Unit was established in 1958 at the request of the Police Chiefs and District Attorney of Rockland County. It is the main source of Crime Scene Investigation for nearly every Police agency in Rockland. The Rockland County Sheriff's Crime Scene Unit has six level 3 fingerprint examiners, certified by the State of New York. No other law enforcement agency in Rockland County has attained such a high level of certification. The members of this unit also provide expert courtroom testimony in county, state and federal investigations.

### **2016 Totals**

Investigations	452
Evidence processing	42 (for other agencies)
Photograph detail	86
DNA collection	14
Photo Line ups	39
Physical Line ups	2

### **Live Scan Fingerprinting System**

The Rockland County Police Division utilizes the Live Scan Fingerprinting System for printing criminal subjects as well as private citizens. All fingerprints are taken digitally and sent directly to Albany for processing using a computer. The Division now also has the ability to process fingerprints in the field through the use of a portable unit funded the County STOP DWI Program.

The Crime Scene Unit provides fingerprinting services on a daily basis for the Rockland County Clerk's Office (Pistol Permit Section). Fingerprinting services for the private sector are also provided for licensed professions such as nursing, or childcare which require certification. In cases where the identity is in question, their fingerprints can be sent out directly and returned within two hours.

### **2016 Totals**

Identification	1
Pistol applicants	1,248
Civilian	379

### **Faro Laser Scanner**

Crime Scene unit Detectives are trained in Computer Aided Design applications for this equipment. The equipment is used to capture a 360 degree image of crime scenes, and creates a virtual 3D / panoramic view that can be used to show the details of a crime scene in the courtroom. Investigators also rely on this equipment for its ability to take precise measurements. In 2016 the equipment was deployed in 2 cases.

### **Fire investigations**

The BCI Fire Investigation Unit of the Sheriff's Office has four level 2 (Highest level of certification) and three level 1 investigators all available to respond to and investigate fires that are deemed to be suspicious in nature or for which the cause and origin are unknown. In 2016 the Division suffered a great loss in the passing of K-9 "Scooter". Det. Lerner and Scooter were dedicated to the detection of accelerants used to start fires. Currently a partnership with the Westchester County Arson K9 ensures coverage for Rockland till anew K9 is trained.

The unit utilizes Bomb Arson Tracking System (BATS), an advanced fire pattern tracking software to monitor and track undetermined fires within the County. Additionally the unit regularly interacts with the Fire services and trains firefighters within the county on the recognition of arson and the preservation of evidence.

The unit also oversees and coordinates the Juvenile Firesetter Program. This program has been established to help reduce the number of fires started by juveniles within our community. The program is designed to assist parents and their children in understanding the dangers of playing with fire, how to prevent repeat behavior, and help those who may have a desire to set fires. It also helps them understand the consequences of their fire setting behavior.

The unit conducts background investigations for all applicants of the 26 volunteer fire departments in the County as per statutory requirements in the State.

Recently the unit began a strategic partnership with the Rockland County Fire Prevention Committee. This new alliance will help both entities fulfill their respective missions by delivering services to the community utilizing shared equipment and expertise from each organization.

### **2016 Totals**

Requests for assistance	77
Incendiary	20
Accidental	38
Environmental	0
Undetermined	11
Under investigation	8
K9 Searches	26
K9 calls for outside agencies	3
Juvenile Firesetter Intervention referral	4
New Firefighter Background Checks	154

## Bomb Disposal and Explosive Detection



In a continuing effort to combat terrorists and domestic acts of violence, the BCI unit of the Sheriff's Office has established a fully operational Bomb Squad (4 technicians) with three full time K 9s "Annie", "Cable", and "Kelsey" who have explosive detection capabilities. Since 2006 the Bomb Squad has received extensive funding through available federal grants. These grants were initially utilized to start the unit and since have paid for their training and equipment. It has also covered the purchase of two well-equipped response vehicles, robots, and a total containment vessel. In 2012, grants have been utilized for the purchase of new canines (due to retirements) as well as new vehicles for the unit. The Team is trained and equipped to respond to all types of hazardous devices and explosive material incidents, as well as chemical, biological and radiological incidents. The team is also trained in post-blast investigations.

### 2016 Totals

Bomb Incidents: 29 (actual bomb calls)  
Bomb Demo: 18  
Bomb K9 Demo: 19  
Bomb K9 Training: 140  
Bomb Training: 81  
Bomb Directed Patrol (Perimeter) Checks: 432  
Total Incidents: 719

### Investigations

The Bureau of Criminal Investigations (BCI) conducts criminal investigations into all criminal matters specifically originating within the Patrol Division, the Correctional Facility, all County-owned properties/facilities and all activities related to the municipality and community in general. Officers carry out investigative work relative to the Department of Social Services Adult Support Collection function. In addition, the unit also conducts investigations into internal affairs of the department and works with local and state police on matters of mutual interest and concern. The unit renders investigative assistance to all police departments and criminal justice agencies as required. Besides the investigative unit the Bureau is comprised of several specialized components. In 2016 a warrant sweep was conducted resulting in 8 arrests with 28 attempts.

Total cases opened 747 (including all warrants etc.)  
Total cases closed 659 (including all warrants etc.)

### Warrants

The BCI unit alone has more than 600 active warrants, the majority of which have originated in cases generated by other agencies.

Warrants opened: 327  
Warrants closed: 288



### Extraditions

The BCI unit is solely responsible for the warrants that necessitate extradition from other states all around the country. Detectives from the BCI unit are sent to various jurisdictions within and outside of New York State to arrest and bring these fugitives from justice back to the county.

### 2016 Totals

Driving 21  
 Flying 16  
 Total 37

### Warrant Wednesdays / Monthly Top Ten

In 2015 the BCI unit introduced and implemented the above programs. A wanted subject is selected each Wednesday and the details publicized throughout law enforcement communities and on social media. Similarly ten wanted subjects are chosen each month for publication. The program has resulted in 12 arrests to date.

### Contraband Interdiction at County Facilities

Targeted monitoring of inmate phone calls has led to the interception of heroin being sent by mail to inmates via the US Postal service. Targets were identified as part of a narcotics conspiracy and brought to justice. In 2016 there were four cases of contraband interdiction at the jail.

### Evidence/Property

788 items of evidence/property were processed in course of various investigations in 2016.

### Probationer Sex Offender Checks (Project Halloween)

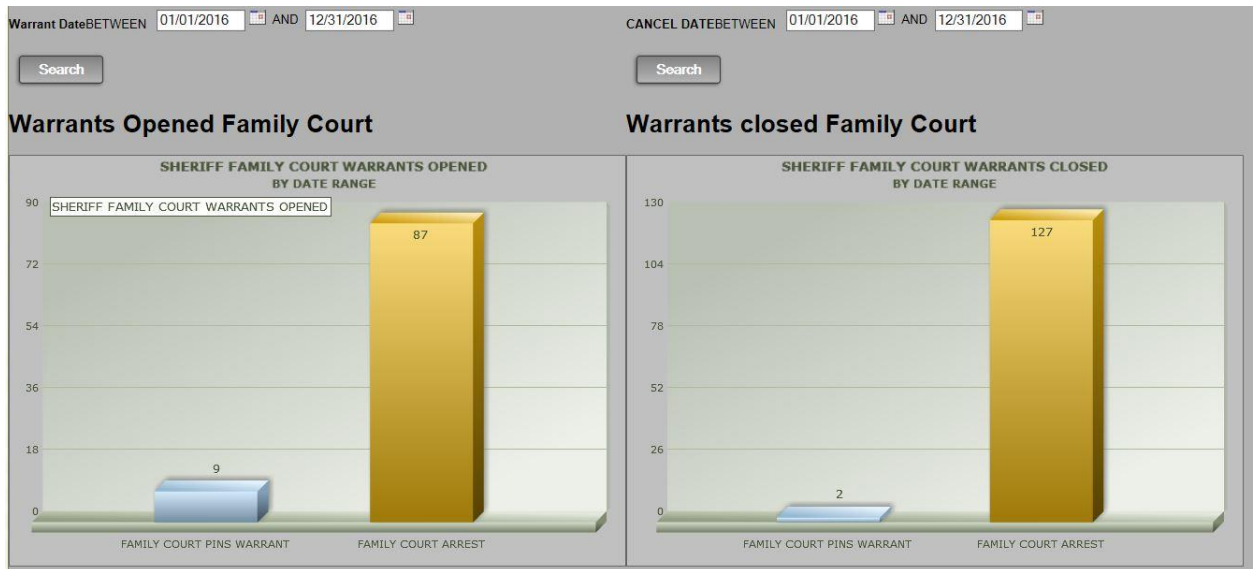
Detectives from the BCI investigations assist County Probation officers in conducting residential checks of registered sex offenders during Project Halloween to ensure that they are in compliance with the conditions of their probation.

## Family Court /IV D Support Collection

The BCI unit handles all warrants either offense or support issued out of the Family court. The offense warrants may be in form of child neglect or a parent/Guardian in the drug treatment program not abiding by the rules set forth by the Court while the support warrants issued are specific to monies owed a petitioner from a respondent. The BCI detectives work in conjunction with the Support collection unit and the Family Court to locate and arrest the respondents.

### 2016 Totals

IVD Warrants opened	62
IVD Warrants closed	102
Offense Warrants opened	25
Offense Warrants closed	25
PINS	2



## Composite Sketch Artist



The Sheriff's Office BCI unit has a composite sketch artist who can provide a rendering of possible suspect(s) for any requesting agency.

## Polygraph

The Sheriff's Office BCI unit has certified polygraph examiners available to assist all local police agencies and the District Attorney's Office with criminal investigations by administering polygraph examinations. The unit is also responsible for conducting Post Conviction Sex Offender Testing for the County Probation Department's registered sex offenders. The sex offenders are required to submit as directed to a polygraph examination to determine if they have been abiding by their Supervision and treatment stipulations while in the community.

### 2016 Totals

Applicants	7
Criminal	9
Sex offenders	20
Total	36



### **Offender Watch (Sex Offender Management & Community Notification Tool)**

The OffenderWatch Program is managed and coordinated by a BCI detective for the Rockland County Sheriff's Office. OffenderWatch manages and monitors the whereabouts, and compliance status of the registered offenders within our County. OffenderWatch provides the most accurate and timely information available. It is updated instantaneously as offender addresses and other offender information is updated in our office. Citizens may search for a specific offender, or for any publishable sex offenders living near a specific address. Users may also confidentially register any address within the participating jurisdictions to receive email alerts each time a new sex offender moves near that specific address. The Rockland County Sheriff's Office maintains the OffenderWatch portal as a community service, in cooperation and coordination with other participating police departments throughout Rockland County. In 2016 there were 13 offenders monitored/updated.

### **Administrative Support**

The BCI unit has a support staff of two part time and three full time personnel, who process all the paperwork and data entry for the unit. They also process all requests for appointments, pistol permits and the applicant background requests. Additionally the following requests were also handled during 2016.

FOILS	51
Sealed orders	72
Purchase Orders	567

### **Informational Technology Services**

#### **RCPIN**

The Rockland County Police Information Network is used to assist in the records management and information sharing associated with Law Enforcement. The Records Management System that is operational contains information on the people, places and vehicles that are involved in each of following areas: Incidents, Cases, Arrests, Property, Warrants, Tickets and Accidents.

Current Sheriff Assignments: 1 Lieutenant (Commanding Officer)  
1 Detective  
1 PO (P/T)  
1 Information Systems Assistant (P/T)  
1 Law Enforcement Systems Specialist

## ***Shared Services***

### **REACT (Rescue Entry and Counter Terrorism Team)**



This multi-jurisdictional team consists of highly trained officers with specific skills in the areas of marksmanship, tactical response containment and deployment of chemical munitions, hostage negotiations, and other specific security threats. These skills would also include the ability to set up defensive positions around buildings, areas, and events for the purpose of deterring and preventing possible terrorist attacks. The Bomb unit supports the REACT function with their explosive breaching program.



## PERSONNEL SUMMARY: (CURRENT SHERIFF ASSIGNMENTS)

Lieutenant (Commanding Officer):	1
Detectives:	2
Officers:	3
Total:	6

## OPERATIONAL SUMMARY

### Total Operations in 2016

High risk warrants:	3
Barricade subject/search:	3
Rescue missions:	0
Vehicle takedowns:	0
Fugitive searches:	1
Counter-terror:	2
<b>TOTAL:</b>	<b>9</b>

Subjects taken into custody:	3
Weapons recovered:	Rifles and handguns
Evidence recovered:	Undetermined amounts of narcotics, stolen ATVs

### Total Operations to date

High risk warrants:	93
Barricade subject/search:	28
Rescue missions:	0
Vehicle takedowns:	2
Fugitive searches:	4
Counter-terror:	3
<b>TOTAL:</b>	<b>130</b>

## TRAINING SUMMARY:

Total training hours allotted:	216
Sniper:	96
Breacher:	40
Crisis Negotiators:	80
TMSU:	72



## SIGNIFICANT INCIDENTS:

1. Team week of training conducted at New Mexico Technology
2. Additional Sniper added to team (Corbett)
3. Additional Dispatch & response communications system implemented (Web based app for team communications (I AM RESPONDING))
4. Brand new Aimpoint sights to replace recalled EoTech sights at a profit to REACT.
5. A large scale pre-planned stand-by incidents both using pre-deployed observation posts for Intel (Black Lives Matter rally).
6. In August, the team successfully talked a suicidal subject armed with a handgun into surrendering after an approximate 5 hour negotiation with the subject. The team was

recognized by the Rockland County PBA for this incident.

7. Team personnel were utilized in the training of the Rockland County Police Academy recruits for high risk work and tactics.

## **Disorder Control**

Originally instituted as the Mobile Field Force the Disorder Control Force concept has been jointly adopted, organized and established by the Sheriff and the Rockland County Chiefs of Police to replace it. All police officers in the County are trained to respond effectively to situations of civil unrest on Day 4 of the Academy In-service Program. This includes cross training with the Mounted unit for deployment. Additionally the Force also plays a role in the County's counter-terrorism plan. They can be used for special tactical assignments like:

Target Hardening and surveillance of critical infrastructure locations

Restricting threatened facility access to essential personnel only

Closing or lockdown of public or government facilities.

## **RC DTF**



This task force is comprised of officers from various Police Departments in Rockland County as well as officers representing the New York State Police. This task force conducts undercover Narcotics operations with the help of confidential informants, surveillance and eavesdropping techniques.

Current Sheriff Assignments: 1 Patrol officer

## **RC Intelligence Unit**



The Intelligence Unit's mission is to provide intelligence to law enforcement, based upon the collection, evaluation, and analysis of information that can identify criminal activity. Officers assigned to the RCIC are primarily focused on crimes related to burglary, robbery, traditional organized crime, street gangs, and identity crimes.

Current Sheriff Assignments: 3 Patrol officers (P/T)

1 Correction Officer  
(Gang Specialist, Spanish Speaking)

## **Computer crimes unit**



In June 2000 the Rockland County Sheriff's Computer Crime Task Force was formed through the partnership of the Sheriff's Office and the District Attorney's Office, to combat the increase of computer-related crimes due to the increased use of computers for e-commerce, e-mail and entertainment. The unit carries out a forensic analysis of computer evidence seized by all law enforcement agencies within Rockland County. Online child pornography, pedophilia, business fraud, proprietary information theft, identity theft, credit card fraud, copyright infringement, counterfeiting, remarking computer intrusion (hacking) and terrorism are all areas where the Task Force has been effective.

The unit also conducts advanced forensic analysis of cell phones, decryption of locked cell phones, relating to various criminal investigations, and audio/video analysis. It is responsible for the recovery and enhancement of audio and digital evidence. Digital CCTV systems, data recovery, DVR hard drive imaging, digital video evidence recovery, digital recorder hard drive recovery, and video processing techniques.

## Special Investigations Unit



On February 9th 2009 the Rockland County Sheriff's Police Division and the Rockland County District Attorney entered into partnership forming the Rockland County Special Investigations Unit. This Unit prosecutes complex cases involving public corruption, white-collar crime, tax fraud, consumer fraud, and other traditional and non-traditional criminal conduct, including organized crime. The Unit uses a variety of techniques, including undercover operations, eavesdropping warrants and the investigative authority of the Grand Jury. The SIU encompasses several specialized functions which include the real estate Fraud Investigations task Force and the Asset Forfeiture Unit. The SIU has conducted joint investigations with the FBI, the US Secret Service, the NYS Banking Department, the NYS Tax Department. The NYS Department of Labor, the Social Security administration, HUD and many other agencies.

## DEA

The Rockland County Sheriff's Office has recently entered into an agreement with the US Drug Enforcement Administration (DEA) and assigned a detective to their office for joint operations.

Current Sheriff Assignment: 1 Detective

## HELP (Helicopter Emergency Lift Program)

The Helicopter Emergency Lift Program, Inc. was started as part of the Rockland County Fire Service Mutual Aid Plan in 1969. Organized as an emergency service unit, HELP provides its services to Rockland County only in conjunction and cooperation with the Office of Fire & Emergency Services, the Sheriff's Office, and other emergency service agencies within Rockland. HELP renders a wide range of emergency services, namely, searching, rescuing, aerial firefighting, aerial ambulance work, police assistance and other disaster aid. The Police Division provides two pilots to the program.



Detective Sergeant Ken Johnston of the Police Division is currently the Chief Pilot for the program and personally flies approximately 50 missions per year. Deputy Ed Weireter is the other pilot.

## *Emergency Management & Counter Terrorism*

### Emergency Management



Mutualink - In 2016 the Sheriff's Office was instrumental in implementing interoperable communications between the Rockland County High Schools, Rockland Community College, and all of the Rockland County police departments. The program connects schools and police to computer communications, portable radios, mobile devices and video and file sharing. The system is also connected to NYS Homeland Security and to Rockland's Emergency Operations Center. All Sheriff's police personnel received training on the Mutualink system.

Our Emergency Management personnel participated in a state-wide "Ingestion Drill" involving a scenario where radioactive material was released in a plume from the Indian Point Nuclear Power plant.

Sheriff's Emergency Management personnel participated in two functional exercises with local fire departments involving railroad hazmat accidents and in a disorder control tabletop with other local law enforcement, NYPD and Baltimore PD.

Sheriff's Emergency Management was on scene at the TZ Bridge crane accident at the command post as a liaison for local police and Sheriff's patrol, marine and aviation assets. Sheriff's Emergency Management staff were participants in a "Chempack" tabletop exercise conducted by NYSDHSES and Nyack and Good Samaritan Hospitals.

### **STC (Secure the Cities)**

STC funding was used to purchase 6 additional Mobile License Plate Readers (LPR's). 4 of these units were distributed to local PD's within the county as part of our ongoing partnership.

The Sheriff's Office participated in a 3-state full-scale STC Radiation Detection and Interdiction Exercise. Sheriff's Officers and State Police members were able to detect, identify and interdict radioisotopes being transported down the NYS Thruway.

Members of the Sheriff's Bomb squad received additional Secondary Screener radiation training funded by the STC.

Members of the Sheriff's Marine Unit also received additional Secondary Screener radiation training funded by the STC.

The Marine Unit participated in several STC maritime chokepoint exercises on the Hudson River.

### **Counter Terrorism (non STC)**



The Sheriff's Office participated in a "Red Team" exercise that was conducted by NYSDHSES in the three county CTZ 4. Members were sent in covertly to test the awareness and reporting ability of various types of businesses in the region.

The Sheriff's Office facilitated a Roundtable discussion group comprised of various civil, ethnic and religious groups along with county-wide law enforcement on Building Communities of Trust and focusing on better understanding and enhancing community-based suspicious activity reporting.

The Sheriff's Office purchased new counter-terrorism awareness "See Something, Say Something" bus signs that are displayed in all of the Rockland County commuter buses. The signs are produced in both English, Spanish and Creole.

### **ATAG (Anti-Terrorism Analytical Group)**



The ATAG group consists of the Sheriff, an Undersheriff and the Emergency Management and Counter Terrorism Sergeant from the Sheriff's Office, former Chiefs of Police in Rockland County, four former Special Agents of The Federal Bureau of Investigation, a retired General, a former member of Military Intelligence, a person familiar with school safety and health issues, a retired military commander familiar with security issues, and a veteran Israeli Army Anti-Terrorism Specialist. They act as a "Think Tank" in order to generate ideas and concepts and to assist in reaching conclusions as to the necessity and feasibility for Intelligence and Security procedures. This group has been very helpful in gearing this County in the right direction. The ATAG group is a component of New York State's Counter-terrorism Zone 4, which is a partnership between Rockland, Orange and Sullivan Counties.

# *Professional Standards*

Professional Standards reflect the expectations that the police service and the public have of how police officers should conduct themselves. It is not intended to describe every situation but rather to set a framework which everyone can easily understand. Public confidence in the police depends on police officers demonstrating the highest level of training, personal and ethical standards.

Listed below is the training that our officers attend to enhance their professionalism, law enforcement capabilities and specialized skills.

## **FBI National Academy**

The FBI National Academy is a professional course of study for active U.S personnel and also for international law enforcement managers nominated by their agency heads because of demonstrated leadership qualities. The program enhances credentials in the field of Law Enforcement. The program also seeks to raise law enforcement standards, knowledge, and also cooperation worldwide. The FBI National Academy is held 4 times a year, when up to 250 candidates go through a 10-week course. While at the FBI National Academy during the 10 week course there are many different classes including; law, behavioral science, forensic science, the terrorist mindset, communication, health and fitness, and leadership development. At the end of the 10 week course there is a final physical exam called the "Yellow Brick Road" which is 6.1 miles in length and has many different obstacles along the way. The National Academy is located at the FBI Academy on Marine Corps Base Quantico, Virginia.



## **FBI National Academy Graduates**

### **Retired Officers**

Det. Lt. Gary Tortorello	188	1997
Det. Sgt. Patrick Cooney	196	1999
Lt. Anthony Costa	219	2004
Capt. John Schnitker	224	2006
Lt. Gary Bowers	230	2007
Lt. Andrew Esposito	231	2007

### **Active Officers**

Sheriff Louis Falco III	194	1998
Sr. Det. Henry Bender	200	2000
Chief William Barbera	227	2006
Capt. Antoine DeColyse	242	2010

## ***2016 TRAINING COURSES***

In Service and Firearms is mandated for all Officers of the Division

1. In-Service – Day 1
2. In-Service – Day 2
3. In-Service – Day 3
4. In-Service – Day 4
5. In-Service – Supplemental Training
6. Supervisor's In-Service
7. Range – Patrol/Det's
8. Range – Transports

Additionally officers also attended the courses/seminars/symposiums listed below to enhance their professional skills and capabilities:

9. 2016 VCS USER CONFERENCE
10. Accelerant K-9 Training – Annual Recertification
11. Accreditation Program Manager Training
12. Active Shooter
13. Advanced Cold Case Long Term Missing Investigations
14. Advanced IED Electronics & Render Seminar
15. Advanced Interview & Interrogation
16. ALERRT – Active Shooter Level 2 – Train
17. All-Terrain Vehicle Basic Operator Course
18. Animal Cruelty Investigations
19. AR-15 Carbine Operator
20. Arresting Communication: Advanced Interaction skills
21. Arson Seminar & Arson Investigation
22. ASP Baton
23. ATF Fire Debris Seminar
24. Basic Investigative Photography
25. Below 100
26. Bloodhound K-9 Certification Training
27. Bomb Squad Symposium - NY State
28. CED – (Taser)
29. Cell Block Survival
30. Cell Phone and Social Media
31. Child Passenger Safety Recertification
32. Civilian Response to Active Shooter (CRASE)
33. CPR – Transports
34. CPR/First Aid Instructor Recertification
35. CPS – Child Passenger Safety Seat Technician
36. CPS Recertification – Child Passenger
37. Crime Scene Investigation / Evidence Specialist
38. Criminal and Drug Interdiction Roads
39. Criminal Intelligence Analysis Essentials
40. Crisis Negotiation Course (Basic)
41. Crisis Negotiations Team
42. CTZ-Zone 4 Red Team Exercise
43. Defensive Driving Training
44. Defensive Tactics In-Service

45. Defensive Tactics Instructor Course
46. Defensive Tactics Instructor in-Service
47. DRE Recertification Training
48. DRE Tablet
49. DWI – Seated Battery of S.F.S.T.
50. DWI Conference – Annual Fall Symposium
51. DWI Documentation and Testimony Training
52. EEO Training – Equal Employment Opportunity
53. Electronic Countermeasure Operator Course
54. Emergency Responder Hazardous Materials
55. Enhancing L.E. Response to Gender Based
56. Excelsior Challenge – Explosive K9 Training
57. Explosive Detection K-9 In-Service
58. Explosive K-9 In-Service
59. FBI Basic Digital Photography
60. FBI Crime Scene Photography
61. FBI National Improvised Explosive F
62. FBI Post Blast Investigator Certification
63. Fire Investigative Photography
64. Fire Scene Evidence Collection
65. Firearms Instructor Training
66. Fugitive Investigations
67. Glock Armorer Course
68. Hazardous Devices Re-Certification
69. ICS – 300 – Intermediate ICS for Expanding Incidents
70. Indicators of the Terrorist Attack Cycle - Advanced
71. Intellectual Property Crimes
72. Interview and Interrogation
73. K9 – Bloodhound Training
74. K9 Crim. Patrol Seminar
75. K9 Narcotics Training
76. K9 Patrol Training
77. Latent Print Processing – Level 1
78. Law Enforcement Supervisor Conference
79. Leading by Legacy
80. Lost Person Behavior & Basic Wildland Search Skills
81. Marine Law Enforcement Training
82. Marine Patrol Vessel Operator's Course
83. Marine Unit Law Enforcement Training
84. Marine Vessel Familiarization – New Boat
85. Mid-Atlantic Law Enforcement Exec
86. Mid-Hudson DWI Conference
87. Missing Persons Toolbox Training
88. NYS DCJS Sniper
89. NYS Fire Investigation Level 2
90. NYS SABIS Site Managers Meeting
91. NYTOA Conference
92. Polygraph Training Conference - Annual
93. Prevention, Response, Recovery – Campus Emergencies
94. Property Evidence Room Management
95. PRSBI – SWAT

96. Public Information Officer Training Course
97. Radar – Lidar
98. REACT
99. REACT – Training Support Personnel
100. Reality Based Training (RBT) Instructor
101. Reality Based Training Instructor
102. Remington 870 Shotgun Armorer Course
103. RIID – 2
104. Secondary Screener/Radiation Isotope
105. Signs of Substance Abuse
106. Site Protection through Observational
107. Sniper Skills
108. Stabilization Training/FBI – Bomb Unit
109. STOP – DWI NY Regional Training
110. Street Survival – Police Academy
111. Street Survival – R.C. Sheriff
112. Supervisor's School – Course in Police
113. T.R.A.U.M.A.
114. Table Top Exercise – Rapid Response
115. Tactics in Traffic
116. Terrorism Incidents: Defensive Operations For Emergency Responders
117. The Second Front – PTSD in LE
118. Traffic Crash Reconstruction Course
119. Transport Supervisor Training
120. Urea Nitrate Class

### ***2016 Awards***

Sergeant Lawrence J. Leavy Distinguished Duty Award  
(Marine Unit)  
Sgt. Omar Munoz  
Sgt. Todd Farmer  
P.O. Robert Vlastelica

Detective Lieutenant Gary Tortorello Outstanding Investigative Award  
Det. Kerry Kralik

Lieutenant Robert Moorfield Excellent Police Duty Award  
Sgt. Christopher Ford  
Sgt. Omar Munoz  
P.O. Robert Moger  
P.O. Jose Nunez  
P.O. Thomas Hendrickson (x2)  
P.O. Simon Perrone

Deputy Val Swartwout Life Saving Award  
P.O. Matthew Leach  
P.O. Simon Perrone



## ***2016 Retirements***

Capt. Matthew McCune: April 28, 2016

PO James Clapp: September 17, 2016

### ***Obituary***

#### **K9 Units**

Gunner February 17, 2016

Scooter October 1, 2016

#### **Capt. Matthew McCune**

In 2016 the Police Division lost a career professional in the passing of Captain Matthew McCune barely 5 months after his retirement. Capt. McCune started his career in the County Jail and subsequently transferred over to the Patrol Division. He rose up steadily through the ranks first running the Marine Unit as a sergeant and then the Transport Unit as a Lieutenant. He was promoted to Captain in 2013 and retired after 35 years of County service in April 2016. He will be forever missed.